



keep in touch

+8613677749970
+ 86 19967863994
Emily@xiruier11.cn

Product Catalog

Address: Plant No. 2, Lying Intelligent Equipment Industrial Park, Xingning District, Nanning City Guangxi, China

website:<https://xiruier888.en.made-in-china.com/>

website : <http://www.xiruier11.cn/>

Guangxi Xiruier Intelligent Technology Co., Ltd.



SEEK SURVIVAL BY QUALITY
SEEK DEVELOPMENT BY REPUTATION

First-class quality First-class service First-class reputation



Our Mission:

Strive to innovate for the benefit of global enterprises

corporate vision:

1. Become an innovative enterprise with sustainable development **for 100 years.**
2. Become a provider of construction equipment and solutions **in 150 countries around the world.**

3 Let the strivers of Zhongtuo realize value return for excellent customers.
core value;

Customer-centric-----enhance the user experience of the product.

Seeking truth from facts ----- customer interests-oriented.

Integrity-----Sincerity and integrity, keep promises.

Unity-----Unite everything to achieve the goal.

Dedication-----Professional and responsible, keep improving.



Guangxi Xiruier Intelligent Technology Co., Ltd. Cleaning Robot is a high-tech enterprise dedicated to providing efficient and intelligent cleaning solutions for the photovoltaic power generation industry. The company focuses on the research and development, production and sales of automatic cleaning robots for photovoltaic components, aiming to improve the power generation efficiency and convenience of operation and maintenance of photovoltaic power stations through technological innovation.

Since its establishment, Xiruier has always adhered to the concept of "green energy, intelligent operation and maintenance", actively responded to the country's call for the development of new energy, and continuously explored and practiced cutting-edge technologies in the field of clean energy. The company's core product, the photovoltaic cleaning robot, adopts advanced navigation and positioning systems, intelligent recognition technology and adaptive cleaning mechanisms, which can efficiently complete the cleaning of photovoltaic panels in various complex environments, effectively remove pollutants such as dust and bird droppings, and significantly improve the photoelectric conversion efficiency of photovoltaic power stations.

Honors and Certificates



EC-RED Certificate

No.:CTIC115249326013118C

Submittor : Guangxi Xiruier Intelligent Technology Co., Ltd.
 Plant No. 2, Lvying Intelligent Equipment Industrial Park, Xingning District, Nanning City Guangxi, China

Manufacturer : Guangxi Xiruier Intelligent Technology Co., Ltd.
 Plant No. 2, Lvying Intelligent Equipment Industrial Park, Xingning District, Nanning City Guangxi, China

Product : Photovoltaic panel cleaning robot

Trademark : 广西曦瑞

M/N : XR2610, XR5688, XR6688, XR3688

| Essential requirement | | Applied Specifications, Standards | Documentary Evidence | Result |
|-----------------------|--------|--|-------------------------|--------|
| Art.3.1(a) | Safety | EN IEC 62368-1:2020 + A11:2020 | CTIC127249326013118-1AR | Pass |
| Art.3.1(b) | Health | EN 60204-1-2018 | CTIC115249326013118AR | Pass |
| Art.3.2 | EMC | EN IEC 61000-6-3:2021 EN IEC 61000-3-2:2019/A1:2021 EN 61000-3-3:2013/A1:2019/A2:2021 EN 61000-6-1:2019 | CTIC145249326013119-1DR | Pass |
| Art.3.1(b) | Radio | ETSI EN 300 328 V2.2.2 | CTIC135249326013119RF | Pass |

The EUT described above has been tested by us with the listed standards and found in compliance with the council RED directive 2014/53/EU. It is possible to use CE marking to demonstrate the compliance with this Directive.

The scope of evaluation relates to the submitted documents only.

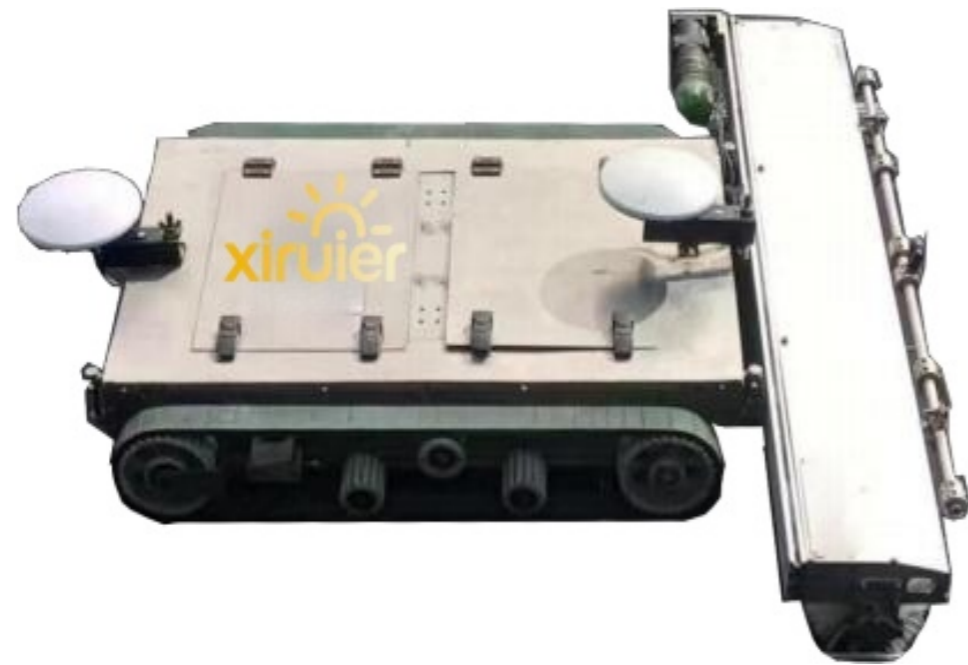


CTIC Testing Group (Guangdong) Co., Ltd.

Add: 201, Building A1 Lilang International Jewelry industrial Park, No.31, BulanRoad,Xialiang Community,Nanwan Street, Longgang District, Shenzhen, Guangdong, China

Certificate Search: 400-6800-890 <http://www.ctic-lab.com> Email:Christina@ctic-lab.com





XR11880 Fully Automatic solar panel cleaning machine

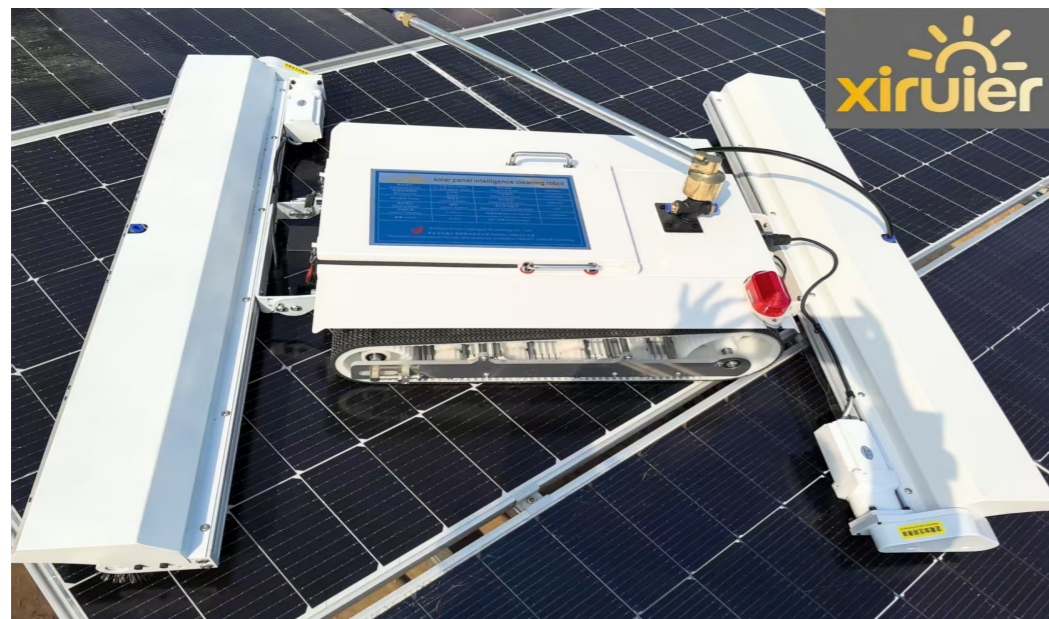
The robot is mainly composed of the robot body, data transmission system, positioning system, power system and battery, operation APP and cloud platform monitoring system.

The robot adopts a fully intelligent, fully automated, unattended cleaning mode and is applied to photovoltaic power stations in the light

Fully intelligent, automated, unattended sweeping

- High cleaning efficiency
- Extremely small turning radius, no sweeping dead ends
- High level of waterproof, dustproof and anti-fogging
- Mobile APP / small program or computer web-based software, remote real-time view of the operating status
- Supports customization and is highly scalable

| | | | |
|----------------------------|--|-------------------------------------|---------------------------------|
| Product Model | XR11880 | Controllers | Industrial PCs (self-developed) |
| Product Name | Automatic solar panel cleaning machine | Control Mode | Fully Automatic, Remote Control |
| Dimension | 1200*700*240 mm | Control Platform | APP, Small Program Web |
| Power Mode | lithium battery | Communication Protocols | RS-485 |
| Battery Capacity | 52AH | Protection Class | IP65 |
| Operating Power | 600W | Working temperature | -10-50°C |
| Battery Life | 8 hours | Design Lifetime | 6years |
| OPERATING MODE | | | |
| Cleaning Mode | Waterless, Washed | Module Surface Coverage | 120% |
| Cleaning Width | 1100 mm | Travel Across Distance | ≤600 mm |
| Travel speed | 0-20 m/ min (adjustable) | RTK Horizontal Positioning Accuracy | 1.0 cm+ 1 ppm (RMS) |
| Cleaning Efficiency | 1200 m ² /h | Anti-Drop Aid | Support |
| Maximum Longitudinal Slope | ≤30° | 4G Communication Module | Support |
| Maximum Lateral Slope | ≤15° | Night work | Support |
| | | visualization system | optional |



XR5688 Portable solar panel cleaning machine

It is an intelligent portable cleaning robot, the main application scenario is the cleaning and dust removal of photovoltaic modules .

- High cleaning efficiency
- High intelligence
- Super ability of incline adsorption, climbing and obstacle crossing
- Small turning radius, no cleaning blind area
- High grade of waterproof, dustproof, anti-fog
- Can be adapted to a variety of environments ,supports customization and high scalability

| | | | |
|-------------------------------|---------------------------------------|----------------------------|--------------------------------|
| Product Model | XR5688 | Battery Life | 8 Hours |
| Product Name | Portable Solar Panel Cleaning Machine | Controller | Industrial PC (Self-developed) |
| Dimensions | 1200X 1200X380 mm | Control Mode | remote control |
| Weight | 38 kg | Control Distance | <300m |
| Power | lithium battery | Design Lifetime | 6years |
| Battery Capacity | 52 AH.24VX2 | | |
| DRY-BRUSH WORKING MODE | | | |
| Cleaning Width | 1200 mm | Component Surface Coverage | 120% |
| Cleaning Speed | 52 m/min | Span Distance | 600 mm |
| Cleaning Efficiency | 2000-2600 m ² /h | Night Operation | Support |
| Maximum longitudinal slope | ≤30° | Visual System | Optional device |
| Maximum Lateral Slope | ≤25° | | |



Fixed Smart Solar Panel Cleaning Machine

This product is an intelligent fixed cleaning robot, mainly aimed at cleaning components of large and medium-sized photovoltaic power stations. When installed, it can be dry-hanged on the photovoltaic module for automatic cleaning.

- High cleaning efficiency
- High degree of intelligence
- Comes with solar power generation, charging and storage devices, self-powered without external power supply, works around the clock
- Strong adaptability, suitable for a variety of areas and terrains
- Automatic/manual control modes, manual mode can be controlled remotely
- Automatic cleaning time and frequency can be set independently according to region or season
- Automatic speed stabilization, the forward speed of the equipment matches the speed of the brush motor to improve cleaning quality
- waterproof, dustproof and fogproof levels
- Equipment components are standardized, easy to transport, install and debug, and parts are easy to replace

| | | | |
|-------------------------------|---|---------------------------|--------------------------------------|
| Product Model | XR-3368 | Working Temperature | 24V/10A |
| Product Name | Remote control crawler photovoltaic cleaning robot | Time Required to Fill the | 6 hours |
| Standard Width | 400 mm | Design Lifetime | 8 years |
| Standard Height | 215 mm | Motor Power | 900w |
| Length | customizable | Brush Hardness | SHORE-A30 |
| Weight | / | Controller | Industrial PC (self-developed) |
| Power Mode | Lithium batteries, rechargeable photovoltaic panels | Network Access | 4G |
| one-way Distance | 50W/24V | Design Lifetime | 6years |
| DRY-BRUSH WORKING MODE | | | |
| Cleaning Speed | 24m/min | Control Mode | Automatic, manual, remote control |
| Maximum | 600 m | Control Platform | Remote service platform + mobile APP |
| Working Temperature | -20~80°C | Night Work | Support |
| Boot Mode | Automatically start on time | | |



XR6688 Shuttletype photovoltaic cleaning robot

This product is an intelligent cleaning robot, mainly aimed at cleaning components of large and medium-sized photovoltaic power stations. It is mainly composed of cleaning robots and shuttle vehicles.

- High cleaning efficiency
- High degree of intelligence
- A single cleaning robot can clean multiple photovoltaic arrays
- The shuttle bus runs on rails and has high stability.
- Comes with solar power generation, charging and storage devices, self-powered without external power supply, works around the clock
 - Automatic/manual control modes, manual mode can be controlled remotely
 - Automatic cleaning time and frequency can be set independently according to region or season
 - Automatic speed stabilization, the forward speed of the equipment matches the speed of the brush motor to improve cleaning quality
 - Waterproof , dustproof and fogproof levels
 - Equipment components are standardized and easy to transport, install and debug
 - Both cleaning robots and shuttles support customization and are suitable for different sizes and working environments

| | | | |
|--|--|-----------------------------------|-----------------------------------|
| Product Model | XR6688 | Battery Power | 24V/ 10A |
| Product Name | Shuttle-type photovoltaic cleaning robot | Time Required to Fill the Battery | -5 hour |
| Standard Width | 600 mm | Battery Life | 6 years |
| Standard Height | 450 mm | Motor Power | 2*90w |
| Length | customizable | Brush Hardness | SHORE-A30 |
| Weight | 45kg | Controller | PC Industrial PC (self-developed) |
| Power Mode | Lithium batteries , rechargeable photovoltaic panels | Network Access | 4G |
| Charging Photovoltaic Panel Power | 50W+30W | Design Lifetime | 6years |
| TIME REQUIRED TO FILL THE BATTERY | | | |
| Cleaning Speed | 26m/min | Night Work | Support |
| Maximum one-way Distance | 600 m (can be customized) | Shuttle Speed | 6 m/min |
| Working Temperature | -20 ~80°C | Shuttle Track Width | 400 mm |
| Boot Mode | Automatically start on time | Shuttle Vehicle Power Mode | lithium battery |
| Control Mode | Automatic, manual, remote control | Battery Power | 24V/ 10A.24V/ 15A (optional) |
| Control Platform | Remote service platform + mobile APP | | |



XR1260 Hand-held Solar Panel Cleaning Machine

The sweeper is manually controlled, adopts waterless sweeping technology and relies on the high-speed rotation of the roller brush to complete the sweeping, which is suitable for most pollutants cleaning work.

- Simple and reliable structure, convenient operation, easy to carry, maintain and use
- Adaptable to a wide range of areas and terrains
- Motorized brush head saves labor
- Support customization of size, dry brush/water wash, brush head, etc

| | | | |
|-------------------------------|--|-----------------------------------|-------------------|
| Product Model | XR1260 | Battery Power | 24V/10A |
| Product Name | Hand-held Solar Panel Cleaning Machine | Time Required to Fill the Battery | -5 hours |
| standard Width | customizable | Design Lifetime | 3-5 years |
| Standard Thickness | customizable | Motor Power | 280w |
| Length | customizable | Brush Hardness | SHORE-A30 |
| Weight | / | Design Lifetime | 6years |
| Power Mode | lithium battery | | |
| DRY-BRUSH WORKING MODE | | | |
| Sweeping Speed | 15 m/min | control mode | manually operated |
| Working Temperature | -20 ~80°C | | |



XR336 handheld solar panel cleaning machine

Double-brush photovoltaic plate washing machine with highlight carbon fiber telescopic rod 4-12 meters suitable for distributed workshop farmer roof, large-scale power stations, mountain photovoltaic power stations, agriculture-light complementary, fishing-light complementary power stations and other large-scale cleaning, applicable to a wide range.

- Adaptable to a wide range of areas and terrains
- Motorized brush head saves labor
- Support customization of size, dry brush/water wash, brush head, etc

| | |
|------------------------------------|--|
| Product Model | XR336 |
| Product Name | handheld solar panel cleaning machine |
| Brush head parameters | 24 volt DC motor speed 350 RPM |
| | Double disc double motor with water outlet |
| Expansion link | Carbon fiber telescopic rod 4-12 meters |
| Telescopic rod diameter | 4-10 m handle diameter 43mm |
| | 9m-12m Handle diameter 50mm |
| Power supply mode | 220v mains.24 volts lithium dual purpose |
| Lithium battery | 24V 30Ah working time 3-5 hours |
| Hairbrush | Wear-resistant high strength nylon fiber |
| Brush head diameter/cleaning width | Brush head diameter 30mm/70mm |
| | Brush head diameter 30mm/70mm |



XR556-Rolling brush photovoltaic cleaning machine

ZTX5-X5-Rolling brush photovoltaic cleaning machine adopts gooseneck design, which is more labor-saving than straight rod and more in line with human mechanics. Cleaning personnel can clean about 0.5-1.2MW a day (please refer to the field data). The length of the pole is 3.5-7.5 meters, which can be freely extended and contracted, and can adapt to various complex terrain environments; Lithium batteries last for about 4-5 hours, making cleaning more convenient. The product design is reasonable, the cleaning is easier, the labor intensity is reduced, and the work is not tired for a day. In addition, three power supply schemes are provided for you to choose from.

- which can be freely extended and contracted, and can adapt to various complex terrain environments
- The product design is reasonable, the cleaning is easier, the labor intensity is reduced, and the work is not tired for a day

| | | |
|------------------|---|---|
| The product name | XR556-Rolling brush photovoltaic cleaning machine | |
| Telescopic | Length (M) | 1.5/1.8/2.1 |
| | Number of stanzas (section) | 3/4/5 |
| | rod Diameter (MM) | 36/39.5/43 |
| | Wall thickness | 1MM |
| | Material | Aluminum alloy |
| Drive the motor | Voltage | DC24V |
| | Name | DC motor Total |
| | power | 650W |
| | Rotate speed | 700r/min |
| Brush head | Cleaning width (CM) | 60 |
| | The width of the brush disc (CM) | 60 |
| | Service life | 1-2 years (Frequency of use) |
| | Material | Nylon wire |
| Wire water | pipes Wire (M) | Household electricity 16 Lithium battery 8 |
| | Water pipe (M) | 20 |



Photovoltaic panel cleaning cart

Solar panel cleaning car adopts chassis, plus high pressure washing system, low pressure washing system, by mechanical, hydraulic, electrical three parts into one solar photovoltaic panel washing operation car. The panel cleaning vehicle is mainly composed of the car chassis, water tank, cleaning liquid tank, water pump, ball valve and water pipeline, sprinkler device, etc. The high-pressure water system is driven by the secondary engine high-pressure pump through the high-pressure pipeline to the nozzle of the cleaning arm to realize the cleaning of photovoltaic panel components. The car can complete the cleaning function of the solar panel at one time, which saves a lot of labor and water, saving time and effort.

- Solar panel cleaning machine can effectively clean the dust or snow accumulation on the photovoltaic panel, which can improve the power generation of the photovoltaic power station and improve the service life of the photovoltaic panel
- Photovoltaic panels clean the car it can save manpower. The photovoltaic panel cleaning car can be operated separately by one person. Photovoltaic panel cleaning vehicles do not need to invest too much manpower to effectively reduce costs, reduce the physical strength of cleaning service practitioners and reduce safety risks, and greatly improve operational efficiency
- It is suitable for cleaning operation under complex conditions such as high and cold areas

| Technical parameters of photovoltaic panel cleaning car | | | |
|---|---|-----------------------------|------------------------|
| Name | photovoltaic panel cleaning car | Type | XR-876 |
| Total weight(kg) | 18000 | volume | 8.6 m3 |
| rated weight(kg) | 8,670 | Dimensions | 7970X2550X3750 |
| Curb weight(kg) | 9200 | Front/rear overhang(mm) | 1260/2210,1420/2050 |
| axles | 2 | Maximum speed (km/h) | 105,89 |
| The number of passengers allowed in the cab | 3 people | Axle load(kg) | 6500/11500 |
| Approach Angle/departure Angle | 19/9°,19/10° | Tire number | 6 |
| Chassis model | EQ1185LJ9CDE | Tire type | 10.00R20,18PR |
| Wheel Base(mm) | 4500 | front gauge(mm) | 1,862,193,319,491,900 |
| Transmission model | Speed 8 | Rear tread(mm) | 18,061,865 |
| Engine type | B6.2NS6B230 | Engine horsepower | Cummins 230 horsepower |
| Tank materia | Q235 Carbon steel | Tank thickness | 4mm |
| Wave board thickness | 3mm | Professional sprinkler pump | Tianyi 50-110 |
| Common function configuration | All forward,after spraying, S type sprinkler antiaircraft gun, fire interface, tank anti-corrosion, side protection, ladder, rear working platform, suction pipe. | | |



MICROFOULING CHEMICAL CLEANING EXAMPLE



微污化学清洗实例

MICROFOULING CHEMICAL CLEANING EXAMPLE



AUTOMATIC SOLAR PANEL CLEANING MACHINE



HAND-HELD SOLAR PANEL CLEANING MACHINE



Xiruier



Why you choose us:

1. We are a real factory offering products and providing free technical advice.
2. Company in business for many years and served Over 50 countries' customers.
3. All machines with CE, ISO, and SGS certificates. Machine and spindle warranty 1 year.
4. We have phone support in English, if you have any questions, you can call us, and we can give you the best solution within 24 hours.
5. Fast delivery, save your time.




xiruier